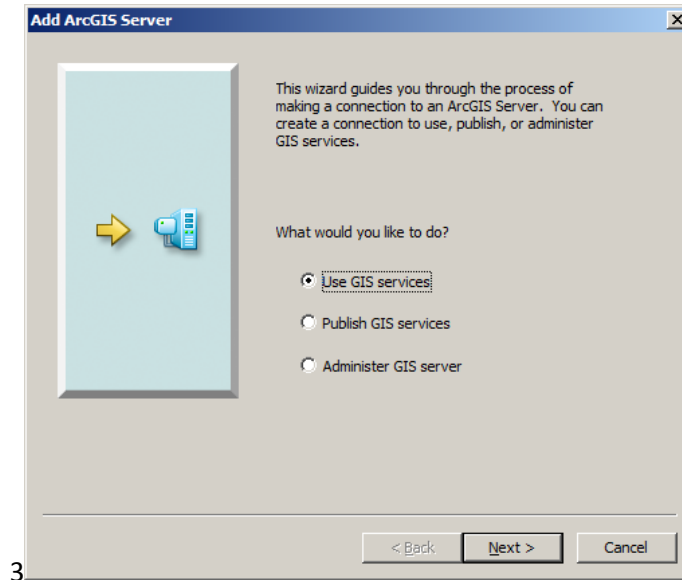
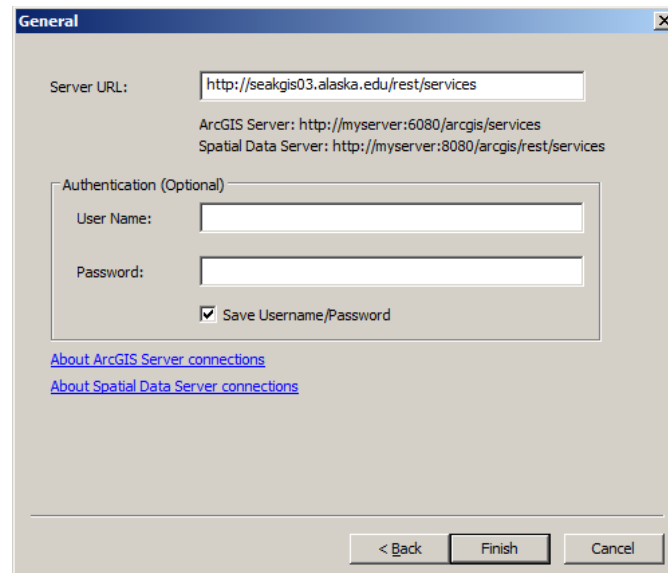


1. Open ArcCatalog and connect to the instance of ArcGIS Server at UAS by clicking on “GIS Servers” in the table of contents, selecting “Add GIS Server”, selecting “Use GIS Services” and clicking “Next” as shown below:



2. Next, ensure that the “Internet” is selected as the type of ArcGIS Server connection, insert “http://seakgis03.alaska.edu/rest/services “ as the Server URL and click “Finish” as shown below.



3. Once connected to ArcGIS Server at UAS, confirm that you can see the web services at the Southeast Alaska GIS Library. An example is shown below. Close ArcCatalog and simply drag or add the data into ArcMap to interrogate it.

- **Note** – once the connection to the web service at UAS has been established, users do not need to recomplete these steps as the connection to ArcGIS Server at UAS will remain cached in the application data for ArcGIS Desktop.

